

Lancashire's Biodiversity Partnership

Business and Communications Plan

www.lbap.org.uk

March 2009 – March 2012

Last updated: *March 2010*



Contents

1. Introduction	3
2. Purpose of Plan.....	4
3. Organisational Vision	4
4. Organisational Structure and governance	5
5. Core competencies / skills.....	7
6. Core Services.....	8
7. Implementation.....	8
8. Delivery	9
9. Financial overview.....	16
10. Communications.....	16
11. Monitoring and review procedure	17
12. Contact information	17
13. List of Partners	18

1. Introduction

Biodiversity encompasses the whole variety of life on Earth. It includes all species of plants and animals, but also their genetic variation, and the complex ecosystems of which they are part. It is not restricted to rare or threatened species but includes the whole of the natural world from the commonplace to the critically endangered.

The world is losing biodiversity at an ever-increasing rate as a result of human activity. In the UK we have lost over 100 species during the last century, with many more species and habitats in danger of disappearing, especially at the local level. On a world scale the rate of loss is now recognised to be a cause for serious concern, requiring concerted international action to prevent continued loss of biodiversity.

The natural environment and the species it contains are important and should be safeguarded for many reasons. Biodiversity brings benefits, not only to the environment, but also to people and the economy. Conservation of species and habitats can give a boost to local tourism, improve the image of an area, provide environments for recreation, leisure and education and also create new employment opportunities. The natural environment of the Northwest contributes over 52,000 jobs and generates £2.3 billion¹.

In response to the threats to biodiversity, there is an England Biodiversity Strategy and Action Plan which identifies priority species and habitats. The North West has a significant proportion of England's species and habitat targets. At the regional level, regional biodiversity targets have been established for habitats delivering the North West Region's contribution to the UK biodiversity targets.

Local Biodiversity Action Plans (LBAPs)

Since 1994, Local Biodiversity Action Plans (LBAPs) have been created by Local Biodiversity Partnerships. These documents are sets of action plans for individual species and habitats and identify a lead partner who will work on the plan. Some projects are advanced and well-funded while others are smaller, and rely on volunteer work. The plans and targets vary, with some having SMART targets which are measurable and relevant, while other plans are in need of updating. Continued funding, and new biodiversity targets to focus delivery, offer opportunity to progress against the goals set out as part of the approach developed when Natural England was first formed. As part of this new approach, one regional and five local Business & Communications Plans have been produced. These will focus the North West's biodiversity action on delivery and ensure effective co-ordination between and across the five local areas in the North West (Cheshire, Cumbria, Greater Manchester, Lancashire and North Merseyside).

Biodiversity in Lancashire

Lancashire contains some of the nation's finest landscapes and outstanding habitats for wildlife, particularly within the county's extensive upland areas, estuaries and wetlands. Moreover, places of value for wildlife, and for people's enjoyment of nature, are found widely throughout the urban and rural areas of our county. However, in spite of efforts by government bodies, local authorities, non-governmental organisations and individuals, these and other habitats are under threat from loss, fragmentation and deterioration of environmental quality. The same is true for many wild plants and animals which depend on these habitats.

This process of decline can be reversed only by co-ordinated and collaborative efforts, based on a common understanding of the problems, needs and priorities at the local, regional, national and international scales. Only by working together can local communities, businesses, landowners, farmers, central and local government, and the voluntary sector achieve this change of direction.

This business plan outlines the steps to be taken by Lancashire's Biodiversity Partnership to act to protect and enhance biodiversity in the next three years.

¹ NWDA (2005) *Nature's Edge. Investing in sustainable development and a natural advantage for England's Northwest.* http://www.nwda.co.uk/pdf/Natures_Edge.pdf.

2. Purpose of Plan

This Business and Communications Plan and the attached Delivery Matrix are concerned with delivery of biodiversity projects and activities during the period from March 2009 – March 2012. This plan is concerned with new, significant biodiversity activity rather than current ongoing or historical biodiversity projects. Existing biodiversity activity in Lancashire is captured in a separate companion matrix but does not form part of the 3 year Business and Communications Plan.

The purpose of the Business and Communications Plan is:

- To set out the local framework for biodiversity delivery.
- To set out priorities for delivery within a three year rolling programme.
- To build on the extensive work undertaken through the creation of Local Biodiversity Action Plans, and to accelerate delivery of the most vital projects.
- To create a plan which is focussed on delivering priorities and targets at a strategic level.
- To enable the partnership to look ahead, allocate resources, focus on priorities and be ready to act on both problems and opportunities.
- The plans will be a tool for potential investors, managers and stakeholders.
- To create work programme for the partnership that is manageable and streamlined and which is realistic, measurable and complete.

3. Organisational Vision

The broad aim of the Lancashire Biodiversity Partnership is to conserve, protect and enhance the biological diversity of Lancashire for current and future generations.

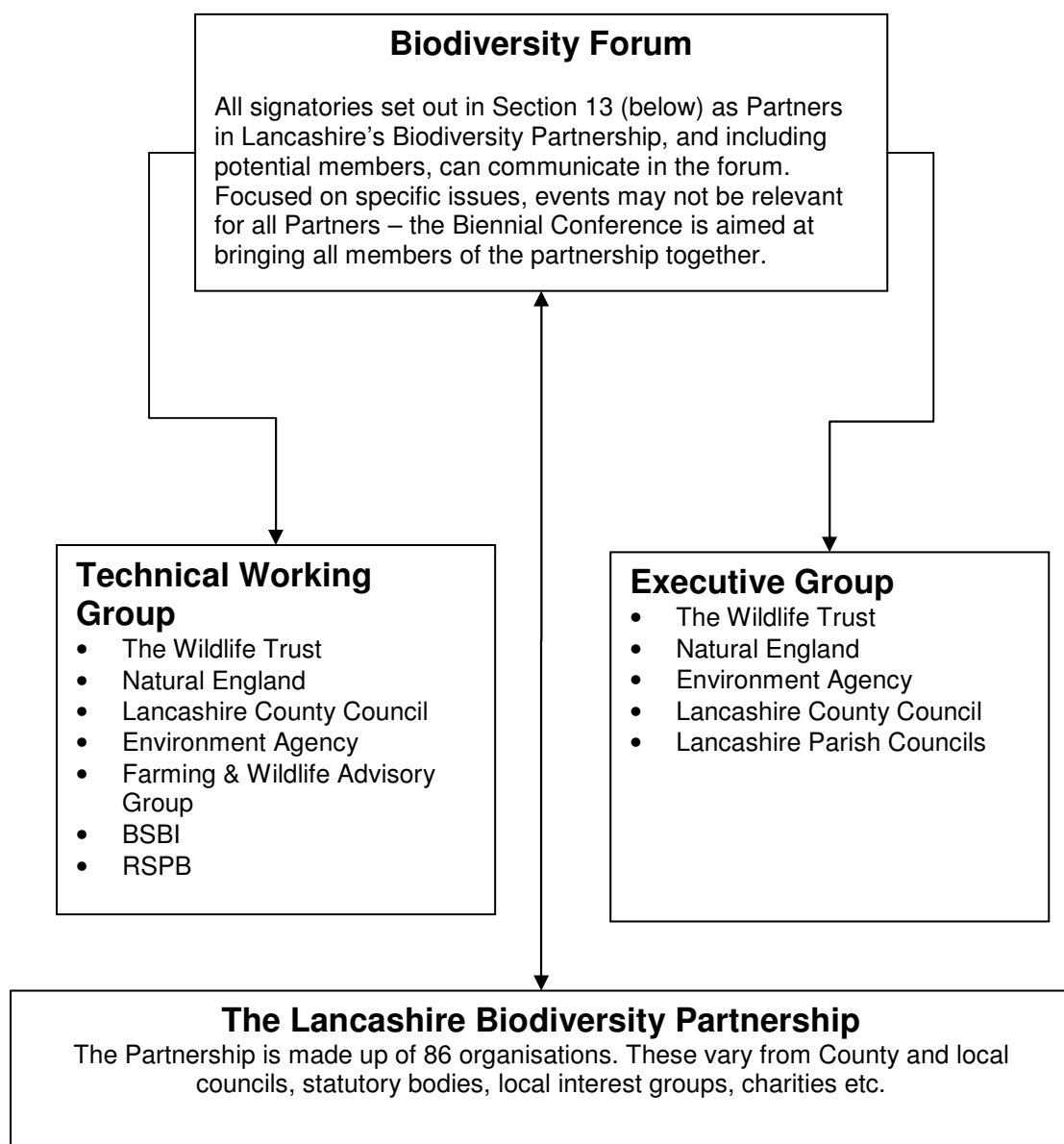
4. Organisational Structure and governance

The Northwest and Local Biodiversity Service

The North West region has a Northwest and local Biodiversity Service made up of the North West Biodiversity Forum and five sub-regional Biodiversity Groups; The Countdown Programme (Cheshire region Biodiversity Partnership), Cumbria Biodiversity Partnership, Greater Manchester Biodiversity Partnership, Lancashire's Biodiversity Partnership and Merseyside Biodiversity Group. Each local partnership has a Biodiversity Manager who works in coordination with the Regional Biodiversity Manager, who ensures coordination across the local areas takes place and that best practice is shared across the region.

The North West Biodiversity Forum is a partnership of over 25 organisations from the public, business and voluntary sector, covering Cumbria, Lancashire, Greater Manchester, Merseyside and Cheshire.

The Structure of the Lancashire BAP Initiative



The Lancashire BAP Executive Group

The group meets every quarter. All members of the group are also members of the Biodiversity Forum. It is chaired by Cllr Janice Hanson and administered by Tim Graham.

The group's remit is to guide the initiative; how new developments affect BAP work, opportunities and threats, priorities for action etc. Members aid BAP work through their organisation where appropriate. The group also oversees the delivery of the Memorandum of Agreement (this is to ensure delivery of the objectives/core services list in section 5 below) with Natural England over the regional funding and to take decisions regarding budgets. The BAP manager submits progress reports to this Group.

The Lancashire Biodiversity Forum

The Group meets twice a year. It is chaired by Cllr Janice Hanson (Lancashire County Council) and administered by Tim Graham (LBM).

The group is drawn from the wider Lancashire Biodiversity Partnership (see Section 13, below). Members are invited to themed meetings to discuss the issues that impact on the county's biodiversity. Topics include the Lancashire Local Area Agreement and the Biodiversity Indicator 197, planning issues, the Lancashire BAP species review etc.

The Lancashire BAP Technical Working Group

The Group meets every three months. It is chaired by Professor Malcolm Edmunds (Wildlife Trust) and is administered by Tim Graham.

The group's remit is to assist with the formulation of new plans, the development of existing plans and any technical details that arise during project delivery.

The Lancashire Biodiversity Partnership

The Partnership is made up of 83 organisations. These range from County and local councils, statutory bodies to local interest groups and charities. All Partners have signed a declaration, stating that they support the wide aim of the Partnership; "to conserve, protect and enhance the biological diversity of Lancashire for current and future generations".

The level of involvement (formal or informal) depends on the organisation in question. Many statutory organisations have a remit to deliver biodiversity actions; other groups deliver actions as they have a keen interest in a specific area. An invitation is to be placed on the Lancashire BAP website inviting members of the Partnership to attend Forum meetings.

The Northwest and Local Biodiversity Service

The North West region has a Northwest and local Biodiversity Service made up of the North West Biodiversity Forum and five sub-regional Biodiversity Groups, The Countdown Programme (Cheshire region Biodiversity Partnership), Cumbria Biodiversity Partnership, Greater Manchester Biodiversity Partnership, Lancashire's Biodiversity Partnership and Merseyside Biodiversity Group. Each local partnership has a Biodiversity Manager who works in coordination with the Regional Biodiversity Manager, who ensures coordination across the local areas takes place and that best practice is shared across the region.

The NWBF is a partnership of over 25 organisations from the public, business and voluntary sector, covering Cumbria, Lancashire, Greater Manchester, Merseyside and Cheshire.

5. Core competencies / skills

The Lancashire team have been working to deliver the BAP since 1998 and have an excellent range of skills, experience and influence to do so.

The current Local Biodiversity Manager (LBM), Tim Graham, has been in post since March 2009. Before him, his predecessor, Jane Ashley, had been delivering a range of projects and support to local councils on their community strategies from 2004-2008. Before this a biodiversity officer was in post from 1999-2004, who mainly assisted in the formulation of the BAP and project delivery.

The **Biodiversity Forum** comprises a range of organisations including those whose core work is the protection and promotion of species and habitats, such as Natural England, The Wildlife Trust and the RSPB, and others whose work has a critical impact on the biodiversity of the county whether through their land ownership, such as the NFU representing the county's farmers, Lancashire County Council and the Countryside Landowners and Business Association; or through their activities on the land, such as the Environment Agency, United Utilities, Lancashire County Council or their representational role like the NFU.

The lead organisations represented in the Lancashire Biodiversity Partnership, together with their main representatives, are outlined in Table 5.1 (below). In addition, the LBM represents the Partnership as point of contact, administrator, project manager and figure head. The LBM is hosted by The Wildlife Trust, and is responsible to the Executive Group and agreed Business and Communication Plans for co-ordinating BAP delivery.

Table 5.1: Main constituent organisations in the Lancashire Biodiversity Partnership and their representatives.

Organisation	Representative
The Wildlife Trust	Tim Mitcham
Natural England	Rebecca Jackson-Pitt
Environment Agency	Adam Walsh
Lancashire County Council	Peter Jepson
RSPB	Andrew Gouldstone
United Utilities	Jo Kennedy
Countryside Landowners and Business Association	Carole Hodgson
Lancashire Parish Councils	Colin Peacock
Farming and Wildlife Advisory Group	Seumus Eaves

6. Core Services

Each Local Biodiversity Group is committed to delivering 7 Core Services which have been developed in partnership with Defra. These core services provide the structure for this Business and Communications Plan. A report is submitted every 6 months to Natural England on the delivery of these Core Services.

The 7 Core Services are as follows:

1. Establishing and maintaining a broad partnership

To establish and maintain a broad biodiversity partnership by engaging all relevant sectors. As far as possible, ensure that all relevant sectors are engaged in the local biodiversity partnership.

2. Delivering Biodiversity Action Plan regionally / locally

To deliver regional biodiversity objectives with SMART targets for habitats and species, taking into account national and regional BAP targets and linking with social and economic themes. To work with the partnership to agree a range of projects to deliver the regional biodiversity objectives and targets.

3. Fundraising for BAP delivery

To develop and implement the fund-raising strategy for BAP delivery, for national and local sources of external funding in support of projects and to sustain the funding for the Local biodiversity service in the long term. To maintain an overview of LBAP funding within Lancashire and work with other sub-regions and regionally on collaborative funding bids.

4. Reporting and monitoring

To report and monitor progress through using the Biodiversity Action Reporting System (BARS) for the implementation and delivery of actions initiated regionally.

5. Integrating BAP into policy (local or regional)

To integrate biodiversity objectives into relevant sub-regional policies, programmes and strategies. Proactively support local authorities so they are better able to deliver bio-diversity locally and promote the inclusion of biodiversity into Community Strategies and other local plans.

6. Promoting BAP

To promote BAP locally through developing a communications plan with partners to raise awareness in support of biodiversity. Working to increase engagement of local businesses and communities in the BAP process.

7. Representation

To work with partners at regional and national levels of the BAP process. Ensuring the LBAP partnership is represented on the regional biodiversity forum and other relevant regional and national meetings.

7. Implementation

The delivery of the Business and Communications Plan will not be the responsibility of any one organisation or body. The Lancashire Biodiversity Partnership is a partnership of organisations all working to increase the biodiversity value and quality of the area. This Business and Communications Plan is shared and owned by the partnership as a whole and a range of individuals and organisations are vital to its successful delivery.

This Business and Communications plan assumes full commitment from the partnership and members of the Exec Group will use their influence in support of the projects identified in the plan.

There is an assumption that projects already underway will continue to deliver on the BAP targets and the partnership will maintain an overview of these projects and should there be a threat to any of them will support and act to safeguard their continuation.

Approach

The Lancashire BAP aimed to fulfil a number of functions that make biodiversity matter in Lancashire and that took into account national, regional and county priorities. The functions and *Business and Communications Plan, Lancashire Biodiversity Service; 2009– 2012*

approach of the plan are used by the Partnership in the way they implement their Business and Communications Plan and are:

- To ensure those national targets for habitats and species, as specified in the UK Action Plan, are translated into effective action at the local level using the Natural Areas framework.
- To identify targets for species and habitats appropriate to the local area, and reflecting the values of people locally.
- To develop effective local partnership to ensure that programmes for biodiversity conservation are maintained in the long-term.
- To raise awareness of the need for biodiversity conservation in Lancashire.
- To ensure that opportunities for conservation and enhancement of the whole biodiversity resource are fully considered.
- To provide that basis for monitoring progress in biodiversity conservation, at both local and national level.

8. Delivery

The detail regarding delivery of the Lancashire Biodiversity Partnership Business and Communications Plan is contained within the attached Delivery Matrix. This document is regularly updated and reviewed and is a living document which both informs and directs the work of the partnership.

Lancashire's Biodiversity Partnership

Business and Communications Planning Format Delivery Matrix

Number/ name	Activity	Linkage	Specific target	Delivery responsi- bility	Barriers	Budget	Funding status	Commun- ications	Time- frame	
1. Establishing and maintaining a broad partnership										
Exec Group Meetings		Guides Initiative and delivery of BAP in Lancs.	Monitors deliverables of Partnership and LBM. Identifies priorities for work.	Four meetings a year	Partnership Chair	Coordinating availability of members			Dates set for rest of 2010.	
BAP Technical Working Group Meetings		Develops new plans, reviews old plans, technical expertise for project delivery.	Report to Exec group	Four meetings a year.	Lancs Biodiversity Manager	Coordinating availability of members			Meetings set.	
Biodiversity Forum		Two meetings per year to be held. Review inclusion of planning group.	Links to all key issues impacting on biodiversity	Two meetings a year.	Lancs Biodiversity Manager	LBM time, interest from invited parties	LBM budget	In kind - hosting of meeting	Previously 1 st oct and 27 th Jan. To be organised 2010	
Partnership conference		Biennial conference for the broad partnership	Link to neighbouring BAP areas	Hold an event involving the whole Partnership.	Lancs Biodiversity Manager	LBM time, funding being sourced	Dependant on arrangements	To be sourced	Major outreach; inform and support.	May 22 nd 2010
Widen partnership through new opportunities		Review how partnership works. Take up opportunities of engaging new partners eg. businesses, colleges and universities, North West Coastal Forum etc.		Widen partnership through opportunities when they arise	LBM, Partnership Chair and all members	Time commitment of potential members	Staff time only		Ongoing	
Local authority officers group/network		Establish and maintain networking group for planning	Planners in other partnership organisations, e.g.	Establish and hold regular meetings of networking group for	Lancs. County Council, Wildlife Trust	Time available to co-ordinate group and of LA Officers.	In Kind (venue), comms costs		Discussions started. Subjects to be identified	

		and other interested LA officers. Review for inclusion as planning specific Forum events.	EA.	local authority planners and other officers		Limited attendance.				and steering group etc. Events to start with relevant subject in 2010
Increase involvement of potential partners		Establish active partnership; liaison with British Waterways, Network Rail, Highways Agency etc. Forum fulfilling?	Work at a regional level?	Build working relationship with organisations to progress future opportunities	LBM, RBM and wider partnership	Will and time of officer in Partner organisations	N/A		Maintain dialogue and open communications	Ongoing.
2. Delivering BAP regionally/ locally (where possible, link Biological Heritage Sites monitoring to projects.)										
Grassland										
Forever Meadows		<i>Ongoing Project</i>						c. £20k to be sourced		Underway from Sept 09
East Lancs Grassland Project – Glorious Grasslands		Identify potential LWS sites for HLS and active management under LAA NI197 and project area. Start steering group	NE, TWT, FWAG, LCC, WPM B Group	Identify target sites and project area, together with management plans, 2009. Review development of project for 2010.	LBM, NE, FWAG, WT		HLS, Staff Time	To be sourced		Needs development in 2010
North Lancs Grassland Project		Currently identifying selection of sites to manage. Working into wider project	FWAG, A&SAONB, LCC, LWT, RSPB	Maintain sites, achieve condition and possible restoration. To be developed.	LWT and to be developed	Funding for project officer and capital works needed. Partners need to be formalised.	Railtrack £8k	To be sourced: LEF and wider funding.		
Upland										
Upland Peat Project		Identify appropriate sites for grip blocking/ moorland restoration. Potential to help develop Upland Peat Partnership/Project.	UKBAP, NW Regional targets. Link to WP Moors project/Bowland and wider upland work.	Identify sites and landowners where grip blocking can be undertaken and utilise money available this year. Develop future strategic plans for	LCC, UU, EA, NE, WPM Biodiversity Group, Bowland AONB, relevant LA's	Officer time, appropriate sites located with amenable landowners	To be formalised and sourced.	£37k pa available from the Scout Moor Wind Farm BEF. NW carbon Fund. EA biodiversity budget. HLS.	Liaison with landowners required. Communication with Mosslands Project	Steering Group meeting 2010. LCC officer working on data and mapping late 2009.

				Lancashire.						
Wetlands										
Mosslands Project		Achieve good conservation management of Mossland remnants. Ongoing acquisition. Development of further project potential at Winmarley	UKBAP, NW Regional targets. Link with Greater Manchester and North Merseyside BAP's. Climate Change agenda. Link with wider landscape linkages and ecological connections regionally.	Target Mossland remnants outside conservation management and existing Mossland project for conservation management advice or land purchase by conservation body.	Wildlife Trust, Environment Agency, NE, FWAG, wetland Vision Partnership, Red Rose Forest	Acquiring funding, particularly for initial landowner liaison. Officer time. Lancashire remnants may prove difficult sites. Other areas prioritised.	Wetland Vision funding.	Acquisition funding easier to come by than development/ liaison element?	Land owner liaison element required. Communications with other BAP areas	Wetland Vision funding success for potential acquisition in Lancashire. Negotiation under way with Duchy and landowners to north.
Ponds		To determine IAP in NW region. To enhance baseline information on ponds, create, and restore ponds of high ecological quality and link to landscape scale biodiversity benefit	Regional Biodiversity partnerships, WT living landscapes, UKBAP delivery targets	Complete IAP 2010. Inform and develop further regional project to deliver on the ground at landscape scale in 2011.	EA, PCT, WT,	Acquiring funding, developing project delivery, LBM time, broadening partnership.	c. £20k for IAP. Further costs to be developed with project.	EA unsuccessful		Need alternative funding.
Coastal and Marine										
Sand Dunes		<i>Ongoing Project</i>				Possible problems on private land.				Man Plan passed by Fylde BC.
Species										
Water Voles – NWLWVP		<i>Ongoing Project</i>								New Officer and continuation being discussed.
Water Voles – “The Fylde”		Project to survey high risk development sites. Also to possibility to include wider volunteer network for survey and events.	Local Authorities, Wildlife Trust, EA and both survey and community work.	Specific site survey for High Risk areas informed by local development plans. Source further funding to extend survey and provide volunteer development.	EA, UU, WT, LBP, Wyre BC, Blackpool, Fylde BC,	Sourcing further funding, limiting project scope	9k sourced. Further 9k to sourced.	£32k EA £1k UU For high risk survey. £500 each LA for volunteer ex.	Local steering group. Need to keep focused and plan publicity.	Awaiting recruitment.
Croston Worm		Review potential for project. Update survey and status information and develop links with	UK BAP species. Linkage to FBA and/or Buglife. Local Angling Group. Link to possible Pond	Update Survey 2009. Review possibility for conservation work including	The wildlife trust, LCC, and potential partners (Local groups, land owners, FBA etc)	Availability of experts and information, developing a deliverable project.	To be developed	£2, 499 available from NE. Need for R. Gibson to be contracted.	Stakeholder liaison, communicate with potential partners and identify	Develop potential project 2010.

		potential partners.	BAP and project work.	translocation and population introduction to donor sites.					knowledge base.	
Brown Hare		Develop past regional survey to include further promotion, public involvement and delivery for BH and other farmland biodiversity.	Lancs, Merseyside and GM survey. Brown hare website. RSPB VA work, FWAG and farm management. HLS.	Review survey, and report on past data. Publicise and develop survey, analyse data and deliver habitat work for BH as indicator for Farmland biodiversity.	WT, UU, Local Authorities, FWAG.	Need for funding. Robust methodology needed for analysis.	c. £86k from SITA Match from GMEU PTES	Successful	Publicity plan for public involvement. Broad partnership to develop and focus on deliverables.	Awaiting recruitment.
Urban										
Urban BAP		Develop Working Group. Possible work with urban green space and link with GI or LA agendas, OMH on PDL.	Partnership. LA and NE agendas for parks etc.	Review potential		Partner time.	To be developed	To be sourced	Possible use of forum to identify partners/issues e.g. parks managers	Event held jan 2010. Group developed April 10.
Green Infrastructure		Maintain potential for BAP delivery in GI strategies. Represent Partnership at NENW events and projects, and regional GI projects.	LEP, NWDA, NE, TWT, LCC, local authorities, FC. Linkage to wide range of BAPs and regional strategies.	Review potential.	To be established	Focusing the wide ranging and strategic/socioeconomic elements in to BAP deliverable projects. Partner communication and	To be developed	To be Sourced	Attend Regional events and investigate local strategies or opportunities. Investigate possible Partnership events.	Awaiting further development.
Other										
LERN		Create plan for delivery of virtual local records centre (based on previous feasibility study). Develop sustainable funding source.	Regional link. UK charity exists to explore Record Centre viability.	Deliver plan for LRC development. Finalise policy on recorder disclosure.	LCC, NE, EA, WT, LRF	Time/ staff resources within LCC. Funding for development.	Lancs NES successful 09-10, 10-11 invoice supported for oct 2010.	Agreed to 2010/11	Communicate value of LRC service. Public level access to data at Tetrads.	Launch in summer 2010
3. Fundraising for BAP delivery										
Identify/ Communicate funding opportunities		Ensure that all new funding opportunities are reported to partnership and	Regional fundraising database, Socio-economic initiatives	Utilise all available funding where appropriate	Executive Group, with support from Region	Funding streams may not be applicable to priority projects. Staff time needed			Communications needed between all Partners to inform of new opportunities.	Ongoing

		utilised where appropriate				to work up/ manage bids			Biodiversity News group can be used.	
4. Reporting and monitoring										
BAP review		Review BAP to take in to account new priorities, create better targets (ie SMART), new plans, include Urban BAP, Rare plant species	UKBAP, regional targets, DEFRA core service requirement	Re-edit and re-write relevant LBAP plans including smart targets. Ensure new plans are compatible with BARS.	Consultant required	Funding for consultant Input again from all groups	To be agreed by Exec and Technical Group-dependant on work required		Communications with each lead partner for each BAP. Technical Working Group to assist.	To be completed by April 2010
BAP Long List		Confirm criteria and full lists through Technical Group. Review inclusion periodically. Use to prioritise work.		Review annually, update with survey data and other information.	BAP Tech Group	Time commitments of Group	Staff time		Website	Confirm List and Criteria for acceptance by Exec group by 2010.
NE core services reporting		Reporting against NE core services on a six monthly basis	Work with regional BM	Submit accurate, timely reports to Regional BM – for Defra.	LBM		core job			Sep 2009, March 2010, Sep 2010, March 2011
BARS		Ensure that partners input information to BARS. Person within each organisation needs to be identified and assigned to one of the 600 actions. Including EA, NE, LCC, LRF etc.	Possible link with regional project to work with partners to obtain data	Each partner delivering LBAP actions should have a BARS inputter. Ensure everyone is reporting	LBM	Time constraints and willingness of partners to participate. Difficulty at national level in organising statutory input. Potential to fall back to LBM.	LBM time	N/A	To partners	Liaise, advising and analysing BARS use with partners. Numerical data on priority habitats to be added to system for 2011 reporting round.
5. Integrating BAP into policy (regional/ local)										
Consultations		Partners to provide information on potential consultations they're involved in.	Some regional documents	Ensure biodiversity is written into certain policies including LDFs and regeneration.	Lancashire LBAP partnership	Time available to capture and co-ordinate a response				Ongoing
Lancashire Climate Change Strategy		Make sure biodiversity is integrated into strategy actions	Woodland creation, peat habitat re-wetting and C capture, wider adaption issues and promote biodiversity	Ensure Biodiversity projects with climate agenda are a priority in policy and delivery. Promote Lancashire's	LBAP Partnership, LCC, TWT, NE.	Communication of benefits and demonstration of value. Staff time.			Partnership to communicate about potential work. Use communication plan to promote	Ongoing.

			assets	biodiversity assets and benefits					benefits in Lancashire.	
NES and NI 197		Develop delivery and opportunities through Natural Environmental Service in Lancashire.	Sustainable community strategy, NERN.	Target local authority funding to deliver NI 197 biodiversity work in Lancashire.	LCC, TWT, Partnership	Communicating value of service. Staff time. Developing sustainable service.		In contact with Las.	Link to LBAP comms. Strategy with annual report for delivery and value.	LAs signed up, 2 not. Funding secure to 2010/11
6. Promoting BAP										
Website Maintenance		Review the effectiveness and functionality of the Lancashire LBAP website and carry out improvements/updates	Provide links from site to all relevant partners	Update information and documents and review BAP website - aimed at all members and potential members of wider partnership.	LBM, LCC and wider partnership	Time for upkeep of site		LCC providing staff time and expertise to develop website	LBM and LCC staff to work closely.	Ongoing. Possible link to BARS.
Linking Biodiversity to other agendas		Ensure that where possible biodiversity and conservation are linked to other agendas	Regional and national initiatives	Link biodiversity to climate change, ecological network, green infrastructure, socio and economic agendas	All Partnership	Opportunities arising where promotion is possible.			Needed with all, general public, policy makers, conservation organisations etc.	Ongoing
Community involvement		Promote annual surveys involving general public. Consider developing records websites. Link with NERN.	2 projects per annum	Create wider community involvement; co-ordinated surveys, postcards, website.	LBM, Brown Hare Group, CLA/NFU newsletter articles, FWAG, UU.	Time to run project that achieves little physical BAP delivery	Funding needed for training days		Publicity for survey is needed	Review people BAP with urban, 2010. Traditional Orchard and Brown Hare.
7. Representation										
Attendance at regional and national biodiversity meetings		Ensure Lancashire is well represented at both a regional and, where appropriate, national level.	NWBAP, Sub-regional BAPs	P Jepson (LCC) and Jonathan Dobson (UU) attend RD forum meeting. Tim Mitcham attends chairs meetings. LBM meetings attended.	LBM	Clashes with other appointments	Staff time			Ongoing
LBAP Managers		Ensure Lancashire LBM meets regularly with managers in other sub-regions to enable and take forward joint activity	NWBAP, Sub-regional BAPs	LBM	LBM	Clashes with other appointments	Staff time			Ongoing

9. Financial overview

The previous Biodiversity Officer was funded by the Lancashire Environment Fund (land fill tax monies). This post came to an end early 2004. Jane Ashley was then appointed as Biodiversity Officer in late 2004. Her funding came from a variety of sources; Lancashire County Council, through local teams of Natural England and the Environment Agency, and through some remaining land fill tax money. The current LBM, Tim Graham, was appointed in March 2009 and funding has continued in a similar way. The period of this report (2009-2012) may see significant development with regard to the source of funding. Various legislative drivers have indicated the need for local resourcing of BAP Partnerships. The Wildlife Trust and Lancashire County Council have approached the local authorities and local strategic partnerships with the aim establishing a Natural Environment Service to provide a sustainable funding source. It is intended to underwrite any future BAP Partnership funding shortfalls through this mechanism. A grant has also been secured from the Lancashire Partnership to help with the establishment of this service and delivery of BAP targets within Wildlife Sites.

The Local Biodiversity Manager is hosted by the Wildlife Trust for Lancashire, Manchester and North Merseyside. All accounts for the post are held by the Trust. The Lancashire BAP Executive Group oversees the delivery of the current contract with Natural England which includes the budget for the post.

Income and expenditure

Funding for 2009/10

Natural England funding for Biodiversity Manager (including EA contribution) - £21,000
Matched funding from a variety of sources including some Local Authorities and under spend - £9,000
Hosting by Wildlife Trust in kind- £2,000 plus free room hire

Funding for 2010/11

£16,000 Natural England funding
£8,000 Lancashire NES funding
£7,000 from 08 under spend
EA contribution to be determined.

Funding 2011/12

NE MOA to be negotiated.
EA contribution to be determined.
Match funding from Lancashire NES to be confirmed by Local Authority sign up.

10. Communications

The work of Lancashire's Biodiversity Partnership aims to bring partners together to achieve more by working together. Good communications is an essential part of our work.

We aim to raise awareness of biodiversity issues and improve the availability of information on biodiversity specifically to:

- landowners and managers
- local authorities (on community strategies, local strategic partnerships, planning networks, and on the dunes project)

We aim to promote long-term involvement in biodiversity conservation projects by individuals and organisations.

Our communications and coordination work also aims to enable greater sharing of information and the exchange of good practice across Lancashire. Further details are set out in the Partnership's *Communication Strategy 2009-2012*.

11. Monitoring and review procedure

The business and communications plan will be considered every six months by the Executive Group and reviewed on an annual basis.

12. Contact information

Tim Graham, Lancashire Biodiversity Manager
c/o The Wildlife Trust for Lancashire, Manchester & North Merseyside, The Barn,
Berkeley Drive, Bamber Bridge, Preston. PR5 6BY.

tgraham@lancswt.org.uk

01772 317242

<http://www.lbap.org.uk>

13. List of Partners

1. Action Darwen Valley (Mersey Basin Campaign)
2. Action Douglas and Yarrow (Mersey Basin Campaign)
3. Action Irk and Roch (Mersey Basin Campaign)
4. Action Ribble Estuary (Mersey Basin Campaign)
5. Action Rossendale Rivers (Mersey Basin Campaign)
6. River Alt 2000+
7. Arnside and Silverdale AONB Forum
8. Amphibian and Reptile Group of South Lancashire
9. Blackburn and District Bird Watching Club
10. British Association for Shooting and Conservation
11. British Trust for Conservation Volunteers
(Preston)
12. Burnley Borough Council
13. Burnley Civic Society
14. Burnley Wildlife Conservation Forum
15. Central Lancashire Friends of the Earth
16. Chorley Borough Council
17. Council for the Protection of Rural Britain
(Lancashire Branch)
18. Cronkshaw Fold Farm
19. Darwen River Valley Initiative
20. Department of Environment Food and Rural Affairs
(DEFRA)
21. Downham Hall Estate
22. District Land Registry for Lancashire
23. East Lancashire Ornithologists' Club
24. Ellel Parish Council
25. Environment Agency
26. Farming and Wildlife Advisory Group
27. The Forest of Bowland AONB
28. Forestry Commission
29. Friends of Ball Grove Park
30. Fylde Bird Club
31. Fylde Borough Council
32. Fylde Naturalists' Society
33. Fylde Ringing Group
34. Gawthorpe Environmental Movement
35. Going for Green
36. Graham Engineering
37. Groundwork
38. International Tree Foundation
39. Keer Falls Farm
40. Lancashire Badger Group
41. Lancashire and Cheshire Fauna Society
42. Lancashire Constabulary – Pennine Division
43. Lancashire County Museums Service
44. Lancashire County Council
45. Lancaster City Council
46. Lancaster and District Birdwatching Society
47. Liverpool John Moores University
48. Lune Rivers Trust (Previously Lune Habitat Group)
49. Mersey Basin Campaign
50. Mersey Basin Trust
51. Moor Lane Urban Islands Project
52. Morecambe Bay Partnership
53. Myerscough College
54. The National Trust
55. Natural England
56. Newburgh Parish Council
57. North West Ecological Trust

58. NPI Red Alert NW
59. Ormskirk and District
Friends of the Earth
60. Parbold Parish Council
61. Parbold and District Tree Wardens Group
62. Pendle Borough Council
63. Pendle Environmental Network
64. Pendleside Books
65. Penwortham Nature Conservation Group
66. Pond Conservation
67. Preston City Council
68. Preston Friends of the Earth
69. Preston Green Forum
70. Prospects Foundation
71. Ribble Catchment Conservation Trust
72. Ribble River Valley Initiative
73. Ribble Valley Borough Council
74. River Enhancement East Lancashire
75. Royal Society for the Protection of Birds
76. Save the Ribble Campaign
77. South Lancashire Bat Group
78. South Ribble Borough Council
79. United Utilities
80. Warton Village Society
81. West Lancashire District Council
82. West Lancashire Environmental Network
83. Wildfowl and Wetlands Trust – Martin Mere
84. Wildlife Trust for Lancashire, Manchester & north Merseyside
85. World Wide Fund for Nature (WWF UK)
86. Wyre Borough Council