

# The Lancashire Local Area Agreement - Back to Basics

11/17/2009

The Lancashire  
Partnership



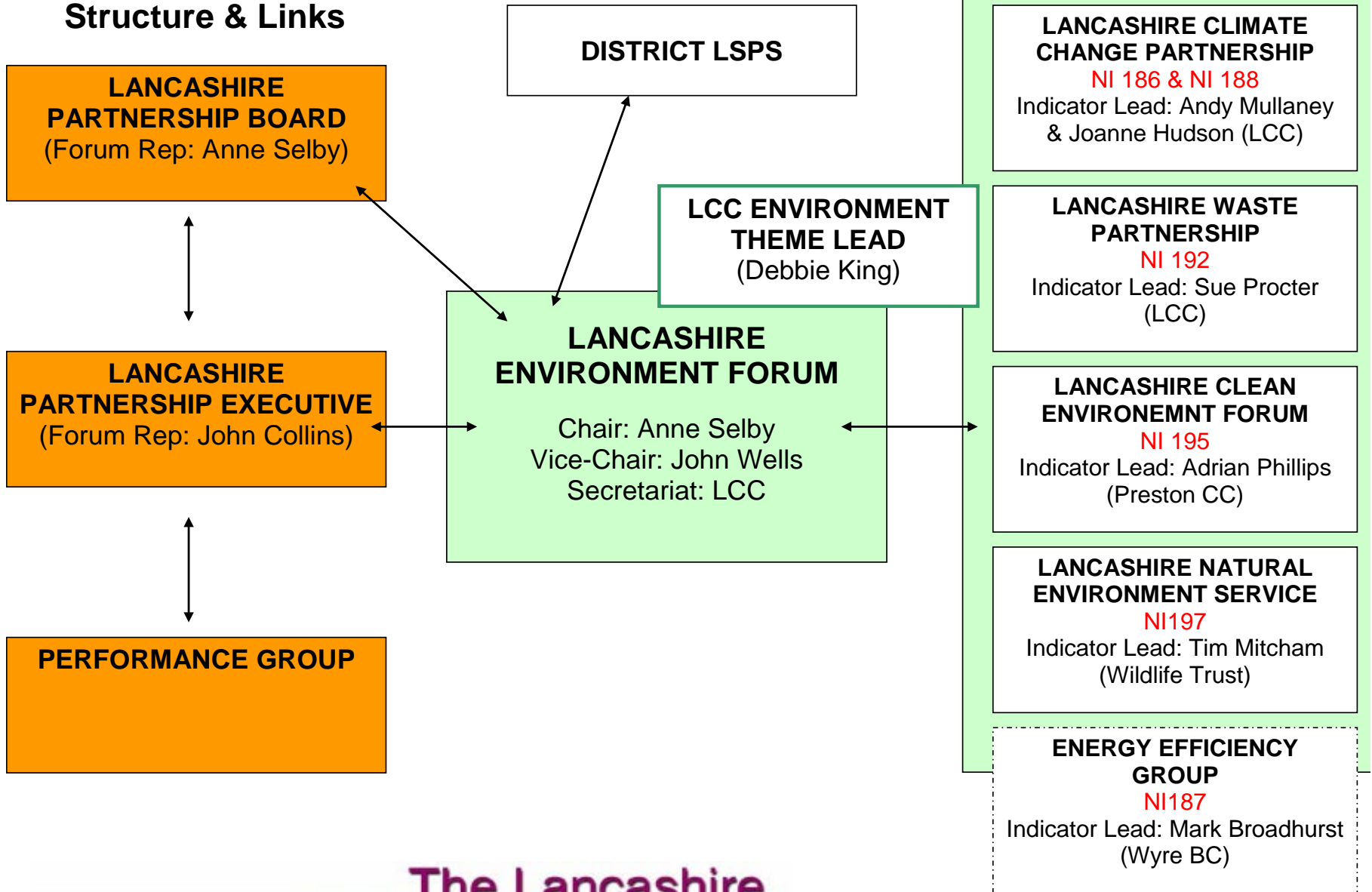
# LAA – What is it?

- Agreement between the Lancashire Partnership & central government on the improvements to be achieved by 2011.
- Delivery mechanism for *Ambition Lancashire* priorities.
- Up to 35 targets are selected to reflect the priorities.
- Owned by Lancashire Partnership, Duty to Co-operate
- Performance Reward Grant
- Comprehensive Area Assessment

# Lancashire Partnership

- Lancashire Partnership Board (Anne Selby)
- Lancashire Partnership Executive (John Collins)
- LAA Performance Group & Data Group
- 7 LAA Themes & Partnerships
  - Theme Lead
  - Indicator Leads
  - Thematic Delivery Groups & LSPs
- VCFs Rep – Julie Claux

## Structure & Links



# Per Capita CO<sub>2</sub> Emissions (NI186)

*12.5% reduction in per capita emissions from 2005 baseline*

- Time lag of 2 years, affected by external factors & baseline continuously being revised.
- Lancashire Climate Change Partnership and activity documented in Climate Change Strategy.
- Actions being identified by:
  - Thematic groups
  - LSPs
  - Organisation Commitment
- Updating mapping, analysis, recommendations for action

# Tackling Fuel Poverty (NI187)

*5.58% of sample respondents in receipt of benefit with SAP<35 & 36.58% with SAP>65*

- Annual district survey, concerns over likely results.
- Lancashire Energy Officers Group work plan
- Increasing grant referrals – working with Adult Community Services & linking with PCTS
- Awareness campaigns e.g. Flu Jab mailouts, Library Energy Monitor Loan Scheme
- Aerial imaging
- ERDF application for domestic energy projects
- CESP

# Climate Change Adaptation (NI188)

## *Level 3 by 2011*

- Completion of the matrix requires a large amount of judgement.
- NI188 Working Group Work Plan
- Completion of LCLiPs.
- Assessing UKCP09 climate projections and working on Lancashire Projections data.
- Developing an adaptation wizard for services to assess adaptation options.
- Completion of Risk Assessments.
- Raising Awareness on adaptation.

# Recycling & Composting (NI192)

*44.25% of household waste recycled and composted by 2011*

- Data calculated by Waste Data Flow based on quarterly submission. Significant time delay & final quarter allows for reconciliations.
- Lancashire Waste Partnership delivering Waste Strategy
- Delivering against identified priorities, e.g. on-street recycling.
- Food waste pilots and further roll out
- Bulky waste
- Integrating district services with the PFI

# Street Cleanliness (NI195)

*Litter: 9%, Detritus: 16%, Graffiti: 4% & Fly-posting: 1%*

- County figure is an average of the annual district data for each of the 4 elements, the lower the % the better the performance.
- Clean Environment Forum & Service Delivery plans
- Districts working to their individual plans with emphasis to be placed on struggling areas.
- Enforcement & Education activities, e.g. Police/PCSOs training, focus on cigarette butts and chewing gum, Schools educational programme

# Biodiversity (NI197)

*24% of sites to be actively managed by 2011*

- Data provided annually by County Biological Heritage Sites Records system.
- Delivery programme for Lancashire Natural Environment Service.
- Ecologists and records officer in post - monitoring sites and engaging with land owners/managers to promote appropriate management.
- Initial focus on formalising management prescriptions for roadside verge BHSs.
- Targeting of other LCC countryside and similar district facilitates and management prescriptions produced.

# Monitoring & Reporting

- Quarterly Performance Reports.
- Half-year (**September**) & Year-end (**March**) – Full reports including district spatial summaries.
- Data only available annually and/or with significant time delay.
- Focus on activity reporting & alternative ways of evidencing achievement.
- Reports to Lancashire Partnership Executive & Board and to GONW.
- Reports feeding into CAA findings.

# LAA Yr 2 Half-Year Performance

- Data
- Progress on Actions
- District Activity

Feeding into the overall Theme Summary

# Further info & Contacts...

[Debbie.king@lancashire.gov.uk](mailto:Debbie.king@lancashire.gov.uk)

(01772 534195)

[www.lancspartners.org/environmentforum/](http://www.lancspartners.org/environmentforum/)

[www.lancashirepartnership.co.uk](http://www.lancashirepartnership.co.uk)